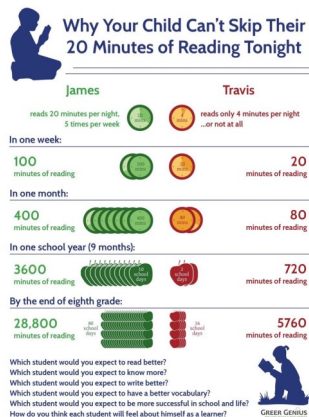


## How can you become more engaged in your child's learning/school?

- Encourage good attendance/ bring your child to school on time everyday.
- Make sure your child has everything they need for school, i.e. correct uniform, PE kit.
- Attend parents' evenings. Communicate openly with school and the class teacher about your child.
- Take part in stay and play sessions at school.
- Join in with organised workshop activities at school to support your child's learning.
- Engage in homework tasks, including listening to your child read 3x a week. Provide a supportive home learning environment with positive attitudes to learning.



## Why is it important to take an active interest in your child's learning?

- Research shows that parental engagement with school has a positive impact on children's educational outcomes.
- Pupils with parents who support their learning most effectively, have better outcomes than those whose parents do not engage with school or support their child's learning.
- Studies have shown that for pupils whose parents weren't previously engaged, involving and engaging parents resulted in 4 months' additional progress for the child.



**DID YOU KNOW?** If you are 15 minutes late each day you will have missed a full 2 weeks of school in one year?



## Parental Engagement

At Westmorland Primary we do MORE



## **What do school/staff do to encourage positive parental engagement?**

- We encourage and reward attendance and punctuality.
- We hold 2 parents/carers evenings each school year.
- We invite all parents to attend learning workshops, sports days and class assemblies.
- All new parents to EYFS are invited to attend a stay and play session alongside their child.
- Our pastoral team are available to speak to parents/carers when they feel they need support or advice.
- Termly newsletters keep parents/carers informed about their child's learning journey.
- End of year reports inform parents of their child's progress, attitude and attainment each academic year.
- Our staff pride themselves on their communication skills and aim to maintain strong levels of communication with parents/carers throughout the school year.

## **This years Workshop dates:**

### **Nursery**

Tuesday 11th March

Wednesday 12th March

Tuesday 24th June

Wednesday 25th June

### **Reception**

Wednesday 9th April

Wednesday 14th May

### **Year 1**

Thursday 30th January

Thursday 8th May

### **Year 2**

Wednesday 15th January

Wednesday 7th May

### **Year 3**

Thursday 6th March

Tuesday 24th June

### **Year 4**

Thursday 23rd January

Thursday 15th May

### **Year 5**

Wednesday 5th March

Wednesday 14th May

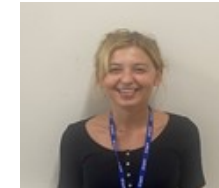
### **Year 6**

Wednesday 19th March

Wednesday 18th June

## **Parental Engagement Officer**

Emily Day—Parental Engagement Officer



My role at Westmorland Primary school is to support parents/carers in building their engagement and involvement with their child's learning. I pride myself on working closely with parents/carers, building good relationships to encourage good communication between home and school.

At Westmorland Primary we have an open door policy. We encourage all of our families to come and see the pastoral team with any concerns or worries about their child's learning and also any home life stresses we can support you with.

Please do not hesitate to come and see one of our team.